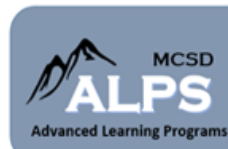


DUAL ENROLLMENT AND ADVANCED LEARNING IN MCS D

2020-2021



Christine W. Hull

Director of Advanced Learning & Gifted Programs
Musco ge e County School District
Columbus, Georgia
706-748-3115



Proposed Changes to DE currently in legislative process: House Bill 444:

The purpose of Dual Enrollment:

- Increase degree attainment at post-secondary institutions (PSIs)
- Decrease time spent pursuing degrees at post-secondary institutions
- Increase the percentage of students enrolling in PSIs
- Increase success rates in high school and in college

Approved Courses:

- 2,613 Core courses & 4,592 CTAE courses available
- Fine Arts, Health and PE, and Personal/Interpersonal/Social Skills courses NOT included

Established Hour Cap:

- 30 hour cap
- Used any term at any location

Grandfathers Current Students:

- 18 hours or less—30 hour cap applies
- 19 or more hours—receives an additional 12 hours
- All Option B students allotted hours to complete their current pathway (request additional information on Option B at the local high school)

Starting Point

- 10th grade is the earliest starting point to take CTAE courses within TCSG
- 10th graders can enroll in core courses if they have a Zell Miller Scholarship score on the ACT or SAT
- Students are eligible to enroll in any courses if they are enrolled as a 9th grader in the 2019-2020 school year

Lottery Funds will not be used for DE, but...

- Students are eligible for HOPE and HOPE Career Grant following high school graduation

Additional Courses

- Student is able to pay for additional courses at their own expense.

Limitations on Previous Allowances:

- 2 course withdrawal limit
- No retakes except in extenuating circumstances

CURRENT BASIC GUIDELINES FOR ENROLLMENT 2019-2020

ALL MCS D high schools offer Dual Enrollment opportunities EXCEPT for **Columbus High School**.

Dual Enrollment in the state of Georgia is completely funded by the state and is offered at no cost to the student EXCEPT for lab fees, certain specialized course fees, and exam fees for admissions purposes.

Students must meet college admissions requirements at each Post-Secondary Institution (PSI) and maintain Satisfactory Academic Progress (SAP) according to the PSI and the high school in order to remain enrolled in the program.

MCS D has a streamlined, but firm procedure for students to participate in dual enrollment (see page 2)

A student must abide by all rules and regulations of both the PSI and the local high school.

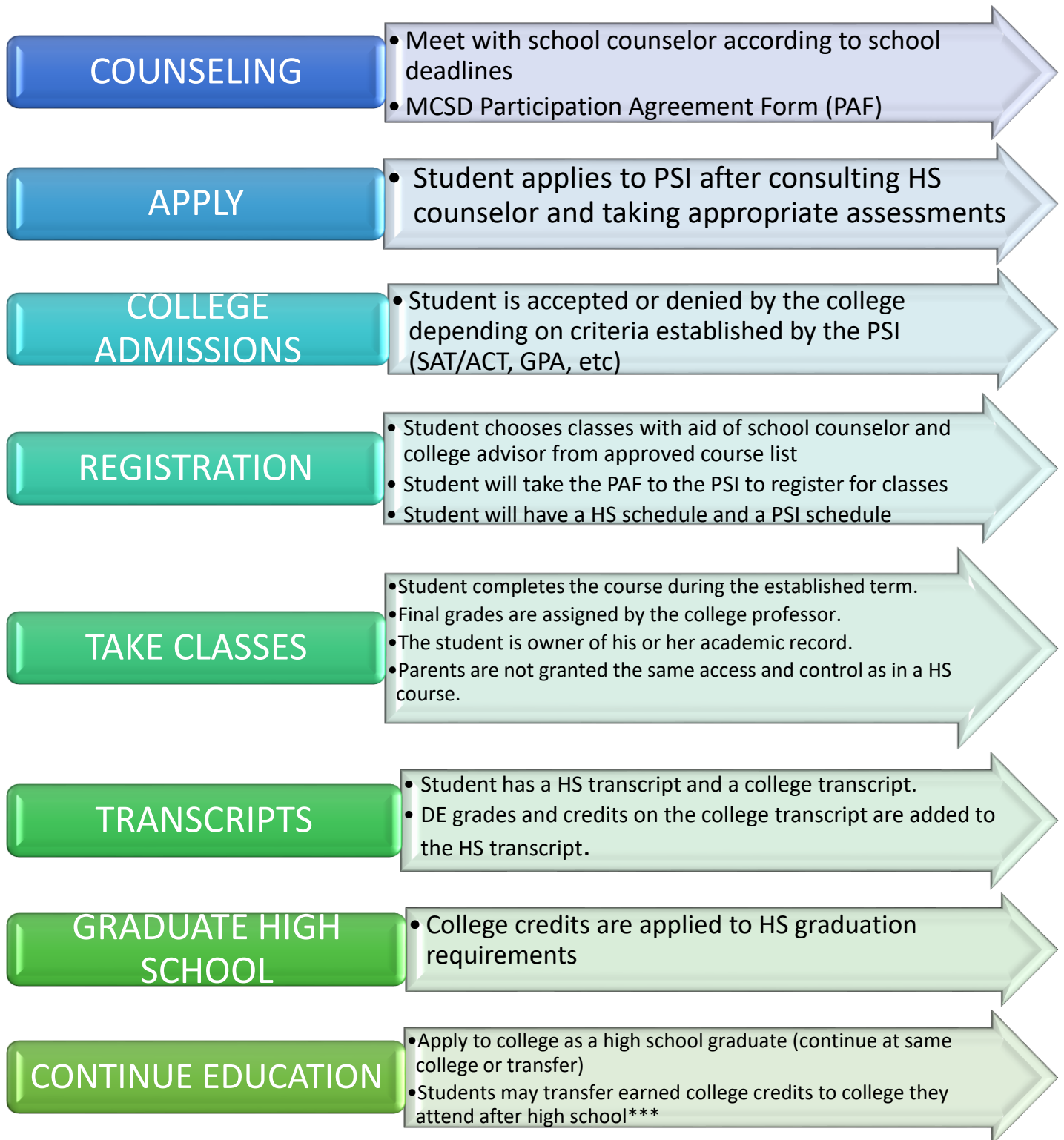
The student becomes the owner of his or her own academic record when entering a DE course and the DE instructor is only obligated to discuss the student's record (grades, progress, etc.) with the student.

MCS D Partners in DE: Columbus State University, Columbus Technical College

We also work with multiple other PSIs to include (but not limited to) Point University and Georgia Military College.

DUAL ENROLLMENT AND ADVANCED LEARNING IN MCSD

HOW IT WORKS:



*****STUDENTS ARE RESPONSIBLE FOR VERIFYING WITH ANY FUTURE PSI WHICH DE CREDITS WILL BE ACCEPTED AND/OR TRANSFERABLE TO THAT INSTITUTION*****

DUAL ENROLLMENT AND ADVANCED LEARNING IN MCSD

DUAL ENROLLMENT FUNDING APPLICATION

- Must be submitted prior to each term during which you take courses (MCSD requires a new PAF for each term as well for this reason)
- Completed through <http://www.gafutures.org/>
- Before submitting your DE Funding Application, the student must have a GAFutures account with a valid SSN in the profile. If you do not have a SSN, you will be required to fill out additional paperwork at the PSI.

ADDITIONAL CONSIDERATIONS FOR DUAL ENROLLMENT PARTICIPATION

- ✓ **Prerequisites:** Students should not enroll in DE math courses until **Algebra II** has been completed on the HS campus. **American Literature** is also a required course that preferably will be taken on the HS campus. Certain college courses have additional prerequisites that students must complete prior to enrollment in desired courses.
- ✓ Students must take the EOC in **Ninth Grade Literature and Composition, Algebra I or Coordinate Algebra, and Biology** due to federal laws that require assessments in math, ELA/reading, and science at least once in high school. All other high school EOCs can now be exempted for students in corresponding dual enrollment courses.
- ✓ Required SAT/ACT/Accuplacer testing has been completed or is scheduled
- ✓ **Academic Rigor**—Understanding that DE courses will be rigorous courses on the college level
- ✓ **Attendance**—Recognizing the importance of attending all classes and following PSI attendance policies
- ✓ **Communication Skills**—Knowing when to ask for the professor's help and learning early each semester how to contact each professor. Understanding that communication from the professor will be with the student and not the parent(s)/guardian(s)
- ✓ **Mandatory Student Events and Trainings**—Participating in mandatory orientations or other events set up the postsecondary school and high school accordingly
- ✓ **Maturity Level**--Making certain that the student's social and emotional maturity level is such that the student will be successful in the DE program
- ✓ **Organization and Study Skills**—Recognizing the importance of time management and being organized as well as having a plan to meet all course requirements on time
- ✓ **Satisfactory Academic Progress**—Understanding the postsecondary institution's SAP (set by the institution)
- ✓ **Syllabus**—Being familiar with each professor's syllabus, which will be the road map for the course and include all important deadlines for the course
- ✓ DE students may also participate in events, clubs, organizations, and athletics at the local high school provided that the student can meet all the requirements for memberships in such groups as written in their bylaws and regulations
- ✓ DE classes attended on the college campus follow the college calendar. DE classes attended on the high school campus during their scheduled school day follow the high school calendar.
- ✓ **All DE courses and the course grades will become part of the student's high school and college permanent (official) transcript.**

DUAL ENROLLMENT AND ADVANCED LEARNING IN MCSD

ADVANCED PLACEMENT:

** Contact the individual schools for a list of AP courses and opportunities that they offer each year.**

38 Advanced Placement courses are offered by the College Board each year. Passing scores (3, 4, 5) on AP Exams each May can earn students college credit or preferential placement at no cost to the student. AP courses are favorable for the college admissions process even if students do not report their exam scores.

- **All** MCSD high schools offer Advanced Placement courses, but the courses differ for each school annually.
- AP teachers must be experienced, successful educators trained by the College Board. They must also complete a successful Course Audit annually. This ensures consistency internationally.
- **Columbus High School** is a wall-to-wall Liberal Arts magnet that specializes in Advanced Placement programming.
- **Northside High School** and **Shaw High School** have both received the **National Math and Science Initiative (NMSI) College Readiness Program Grant** with the aid of the DOD for the next two years to promote and nurture Advanced Placement Math, Science, and English Language courses, teachers, and students for the next two years.
- **Jordan Vocational High School's** College and Career Academy will offer AP courses alongside a variety Dual Enrollment options.
- MCSD and the state of Georgia currently provide funding to mitigate the cost of AP Exam fees.
- Students who participate in AP classes get a taste of college while still in high school, are more marketable for college admissions, develop skills necessary for college success, and have the opportunity to explore a variety of subjects in-depth in the areas of their strengths and passions.
- New regulations propose that students who take AP courses may be exempt from certain previously required assessments.

INTERNATIONAL BACCALAUREATE:

The IB Programme focuses more on social-emotional learning and global citizenship than do other advanced programming models.

CLUBVIEW ELEMENTARY SCHOOL

RICHARDS MIDDLE SCHOOL

HARDAWAY HIGH SCHOOL

- ❖ The IB Programme at each of the three MCSD schools listed above has a unique set of admissions criteria. Contact the school for their application process and admissions procedures.

Students at International Baccalaureate® (IB) World Schools are given a unique education. They will:

- be encouraged to think independently and drive their own learning
- take part in programmes of education that can lead them to some of the highest ranking universities around the world
- become more culturally aware, through the development of a second language
- be able to engage with people in an increasingly globalized, rapidly changing world.

IB teachers and administrators are specifically trained through multiple professional development opportunities.

IB exam funding is provided by MCSD so that the cost is free to students.

IB World School students develop strong academic, social and emotional characteristics. They are also likely to perform well academically and be successful in college endeavors worldwide.

Dual Enrollment, AP, or IB?

Similarities:

- All expose students to college level work.
- All allow students to earn college credits while in high school.
- All are proven by research to increase students' chances of success after high school in pursuing a college degree or entry into the workforce.

Differences:

- Dual enrollment performance and credit rewarded is based on a course grade while AP and IB scores are based on standardized exams taken in May of each year.
- AP students take the course in a high school setting with other high school students. Dual enrollment may take place either at the high school or at a local college depending on offerings.
- Success rates may vary per individual, per institution, per instructor.

Other Considerations:

- ✓ AP and IB are internationally standardized and recognized. DE is localized and may not be accepted in all of its many forms depending on the post-secondary institution.
- ✓ Private PSIs do not have to accept DE credit. Institutions outside of the state of Georgia do not have to accept DE credit. DE credit can transfer as coursework not attached to a degree pathway, elective credit, or no credit may be awarded at all depending on the program of study.
- ✓ DE courses taken in CTAE areas can lead to certifications needed for immediate entry into the workforce.
- ✓ A student can possibly earn his or her Associates Degree and/or technical certifications while still in HS through DE.
- ✓ Parents do not have access to students' scores, grades, progress, etc. in DE courses in the same manner as they do for AP and IB courses. Parents are also not allowed contact with college instructors on behalf of their children. Parent conferences are not available for DE students with regards to their DE coursework.
- ✓ The opportunities for success are relatively equal for all three pathways according to research. Research also shows that students who have BOTH DE courses and AP/IB courses have increased chances for success because of the options that they provide.

Every student's path is different.

The decision to take a Dual Enrollment course (or any other course) should be about the individual student's STRENGTHS, GOALS, NEEDS, and INTERESTS.

It's not always either/or...

It could be both/and/neither!

What is the student's END GOAL?